

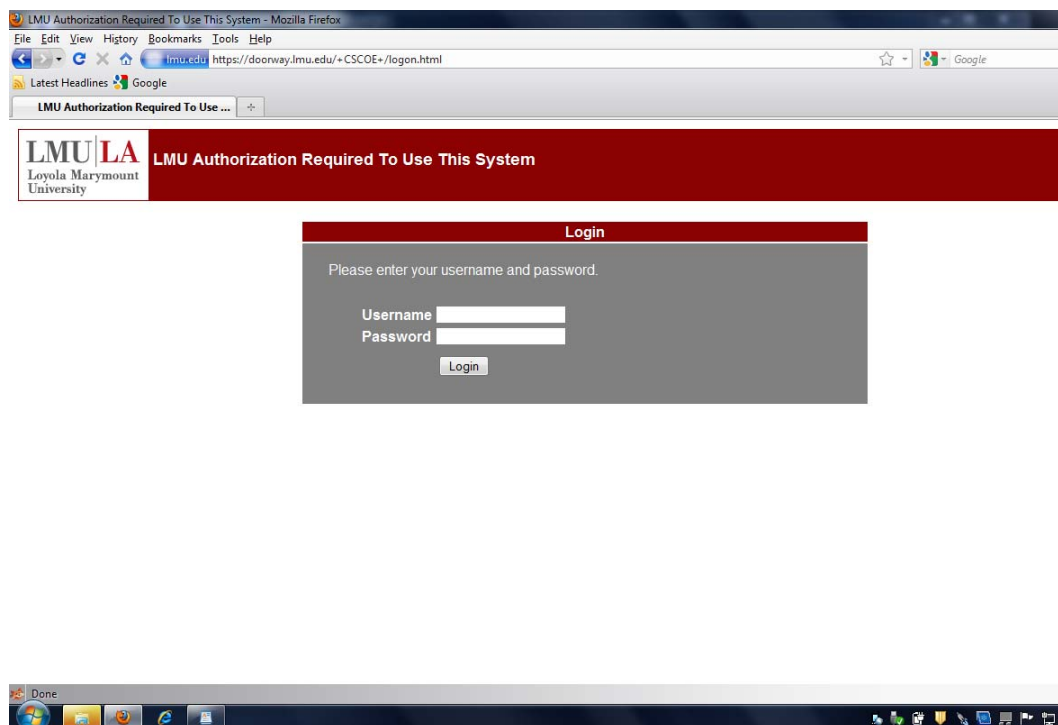
We have upgraded our VPN concentrator and therefore, we have updated our instructions to reflect the multiple operating systems that our VPN connection can now support.

Microsoft Windows 7

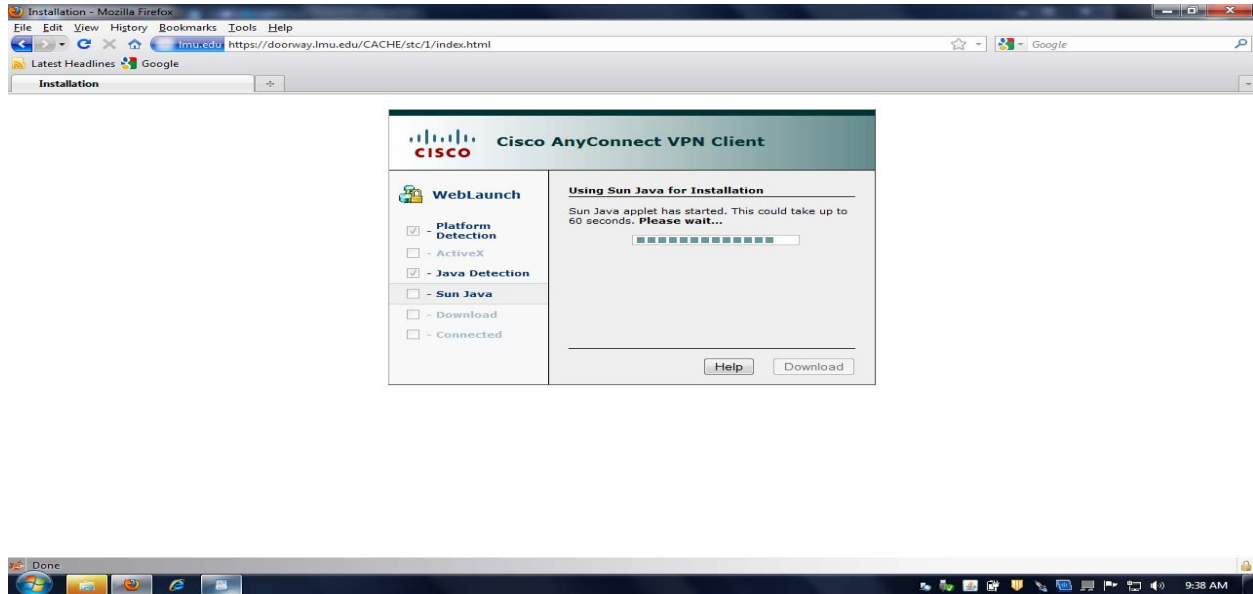
Using the web browser:

Direct your web page to <https://doorway.lmu.edu>

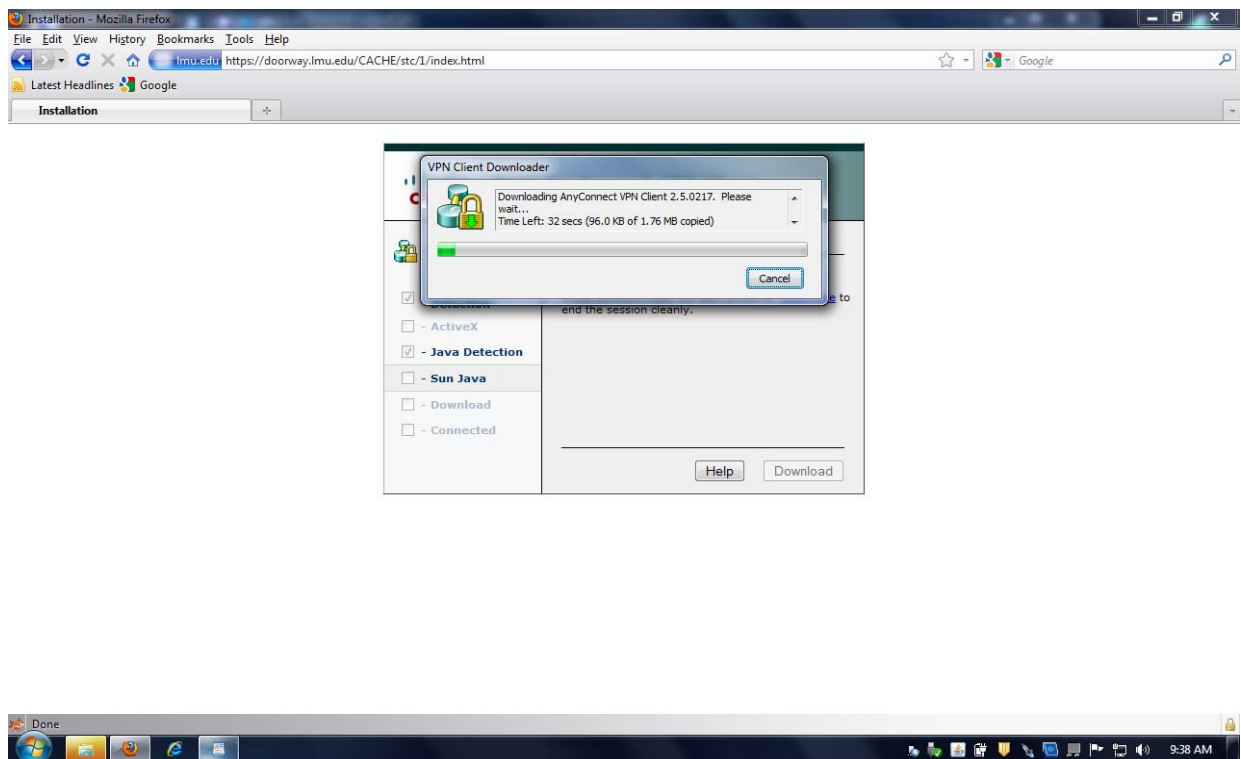
You will be directed to a login page and may get a screen similar to this:



Log in with your credentials and you will now come to a webpage that will scan your computer to find the correct VPN client to install. When the scan is complete, the web server will have automatically installed the VPN client for you and you will get a successful installation page shown below. If you are asked to verify the installation of scripts, please allow the installation.



Your computer will now download the VPN Client for your Operating System



When you receive this message, you should have a new icon down below. This icon indicates that you are connected to the VPN.



To disconnect from the VPN, simply right click on the icon and select disconnect.